



2018-2023 Jeep Wrangler JL  
2-Door 4WD  
2018-2023 Jeep Wrangler JL  
Unlimited 4-Door 4WD  
2021-2023 Jeep Wrangler 4xe 4WD  
2020-2022 Jeep Gladiator JT 4WD

## High Clearance Dual Steering Stabilizer Kit Installation Instructions

### Required Tools List:

- SAE Sockets \ Wrenches  
(1/2", 9/16" & 11/16")
- Adjustable Pliers
- Safety Glasses • Wheel Chock
- Measuring Tape • Torque Wrench

Before beginning the installation, read these instructions thoroughly & completely. Please refer to the Parts List to insure that all parts & hardware are received prior to disassembly of the vehicle. If any parts are found to be missing, contact SKYJACKER® Customer Service at 318-388-0816 to obtain the needed items. If you have any questions or reservations about installing this product, contact SKYJACKER® Technical Assistance at 318-388-0816.

### Important Notes:

- ONLY Fits Models Equipped with a Minimum of 2-Inches of Lift to Maintain Proper Clearances.
- Does NOT Fit Stock Height Models.
- Does NOT Fit Aftermarket Axles with 3-Inch Diameter Tube.
- Steering Stabilizer Boots Are NOT Included with this Kit to Maintain Proper Clearances.



## Component Box Breakdown:

### Part # 7208

Item #	Description	Qty
7500WS	STEERING DAMPER, WHITE	2
HYDRO 4.75-CL	DECAL, HYDRO STABILIZER	2
HB-7208	HDWR BAG: 7208 / 9208	1
7208-MB	CENTER AXLE BRACKET	1

### Part # 8208

Item #	Description	Qty
8500BS	STEERING DAMPER, BLACK	2
MXSD-S	DECAL, BLACK MAX STABILIZER	2
HB-8208	HDWR BAG: 8208	1
7208-MB	CENTER AXLE BRACKET	1

### Part # 9208

Item #	Description	Qty
9500WS	STEERING DAMPER, SILVER	2
SSD	DECAL, SILVER STABILIZER	2
HB-7208	HDWR BAG: 7208 / 9208	1
7208-MB	CENTER AXLE BRACKET	1

## Hardware Bag Breakdown:

### Part # HB-7208

Item #	Description	Qty
38X234X312U	3/8 X 2-3/4 X 3-1/2 U-BOLT, RD	2
38FSCTN	3/8 SERRATED FLANGE NUT	4
516X112X214U	5/16 X 1-1/2 X 2-1/4 U-BOLT, RD	4
516FSCTN	5/16 SERRATED FLANGE NUT	8
STEM BUSH-SST	STEM BUSHINGS, RED	4
HOURLASS 5/8	HOURLASS, 5/8 X 1.50, RED	2
140629	EB6 STRAIGHT STUD, 141397	2
142120	WASHER PACKAGE, P889\145098	2
7208-D	TIE ROD BRACKET, DRIVER	1
7203-FP	NAMEPLATE BRACKET, FRONT	1
7208-P	TIE ROD BRACKET, PASSENGER	1

### Part # HB-8208

Item #	Description	Qty
38X234X312U	3/8 X 2-3/4 X 3-1/2 U-BOLT, RD	2
38FSCTN	3/8 SERRATED FLANGE NUT	4
516X112X214U	5/16 X 1-1/2 X 2-1/4 U-BOLT, RD	4
516FSCTN	5/16 SERRATED FLANGE NUT	4
HG5815-K	HOURLASS, 5/8 X 1.50, BLACK	2
STEM SST-K	STEM BUSHING, BLACK	4
140629	EB6 STRAIGHT STUD, 141397	2
142120	WASHER PACKAGE, P889\145098	2
7208-D	TIE ROD BRACKET, DRIVER	1
7203-FP	NAMEPLATE BRACKET, FRONT	1
7208-P	TIE ROD BRACKET, PASSENGER	1

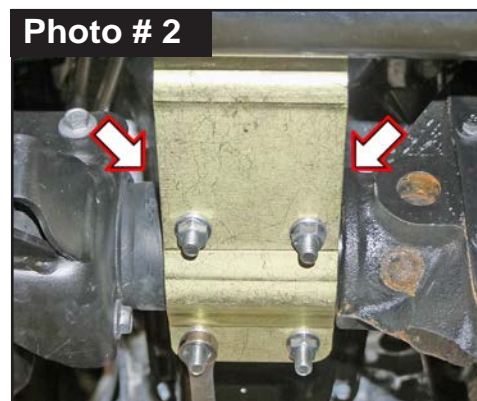
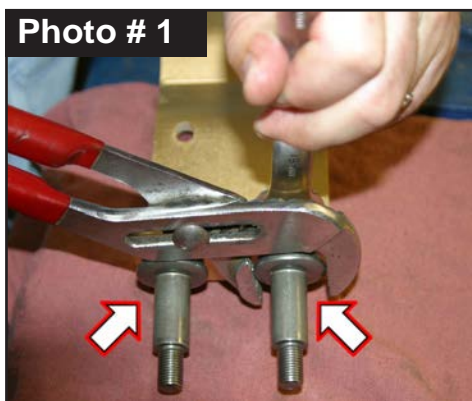
## Pre-Installation Tips: Install Cylinder End Eye Bushing.

1. Coat Hourglass Bushing with a water resistant grease & press into stabilizer cylinder body eye.

## Installation: **Note:** Save all factory components & hardware for reuse, unless noted.

1. Chock rear tires \ wheels. Ensure that vehicle transmission is in PARK and engage emergency brake. **Note:** Be sure steering wheel \ wheels are pointing straight forward.

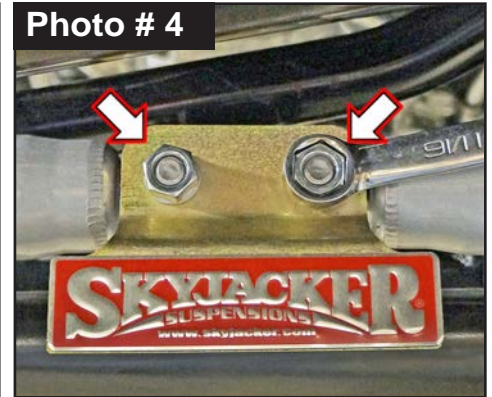
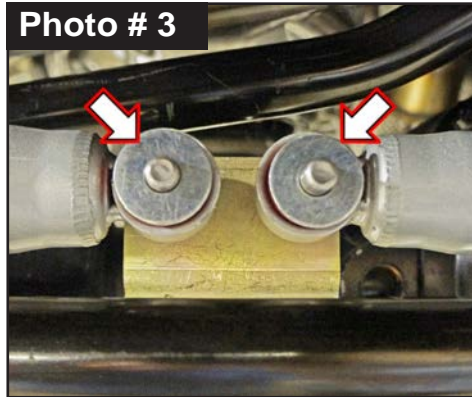
2. Locate Skyjacker # 7208-MB Center Axle Bracket. Attach two (2) supplied Skyjacker # EB6 Straight Studs to Skyjacker Center Axle Bracket tab hole mounts with supplied washer & nut using adjustable pliers & a 11/16" socket \ wrench. (See Photo # 1)



3. Place Skyjacker # 7208-MB Center Axle Bracket Assembly (with studs pointing forward) against bottom of OEM axle & against the differential housing. Attach with supplied 3/8" x 2-3/4" x 3-1/2" U-bolts from top-to-bottom around OEM axle through Skyjacker bracket mounting holes. (See Photo # 2) Attach U-bolts with supplied 3/8" Serrated Flange Nuts using a 9/16" socket \ wrench. Secure, but **Do Not Completely Tighten.**

4. Coat straight portion of each # EB6 Straight Stud mount on Center Axle Bracket Assembly with a water resistant grease. Press stabilizer cylinder body eye bushing onto stud. Install supplied Large Flat Washer. (See Photo # 3)

5. Attach Skyjacker # 7203-FP Front Nameplate Bracket onto Center Axle Bracket Assembly. Attach with supplied Lock Washer & Nut. Tighten nut using 11/16" socket \ wrench until lock washer is compressed & bushing starts to swell slightly. (See Photo # 4)

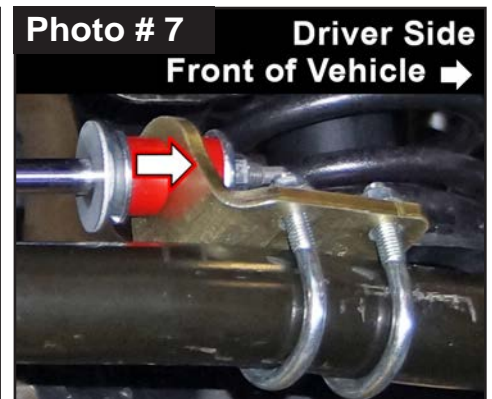
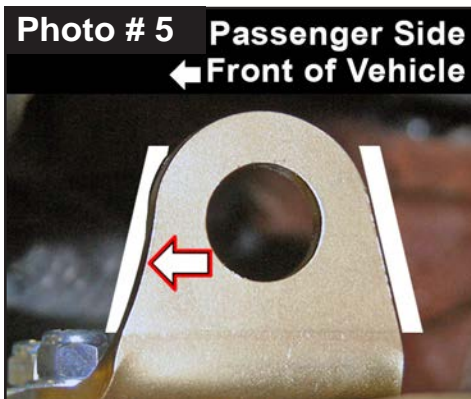


6. **Note:** Skyjacker Tie Rod Brackets Are Side Specific: Driver # 7208-D & Passenger # 7208-P.  
**Tech Note:** Curved portion of Tie Rod Brackets faces forward to front of vehicle. (See Photo # 5)  
 On Passenger Side, place Skyjacker # 7208-P Tie Rod Bracket against top of tie rod with single hole mount toward driver side. (See Photo # 6)

Attach with supplied 5/16" x 1-1/2" x 2-1/4" U-Bolts from bottom-to-top around OEM tie rod through Skyjacker bracket mounting holes.

Attach U-Bolts with supplied 5/16" Serrated Flange Nuts using a 1/2" socket \ wrench. Secure, but **Do Not Completely Tighten**.

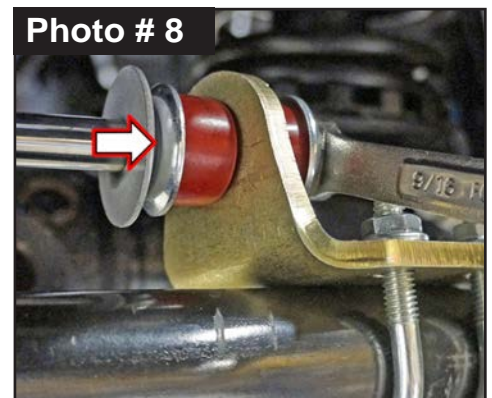
On Driver Side, repeat process with Skyjacker # 7208-D Tie Rod Bracket. (See Photo # 7)



7. Install a supplied Washer & Poly Stem Bushing on shaft end of stabilizer.

Attach to Tie Rod Bracket with supplied Bushing, Washer & Lock Nut. (See Photo # 8)

Tighten stem lock nut until bushing starts to swell slightly.





8. Extend each Skyjacker Tie Rod Bracket \ Shaft End out exactly half way (**3-1/4 Inches**). The center-of-stud to shaft stem washer of each stabilizer will be **13-1/2 Inches** when the steering stabilizer is extended out half way. (See Photo # 9)

**Note:** Tighten Center Axle Bracket Assembly so there is **1/4-Inch** clearance between Skyjacker steering stabilizer bodies & upper OEM drag link assembly.

Cycle steering from side to side & check for adequate clearance.



9. Torque Center Axle Bracket U-Bolts 30 ft-lbs.  
Torque Tie Rod Bracket U-Bolts 240 in-lbs.

**Final Notes:**

- After installation is complete, double check that all nuts & bolts are tight.
- With vehicle placed on ground, cycle steering lock to lock & inspect steering for proper operation, tightness & adequate clearance.
- After first 100 miles, check all hardware for proper torque & periodically thereafter.

**Seat Belts Save Lives. Please Wear Your Seat Belt.**