

READYLIFT[®]

SUSPENSIONS

69-54250 2024 Toyota Tacoma 2.5" Lift Kit

IF your ReadyLIFT[®] product has a damaged or missing part, please contact customer service directly and a new replacement part will be sent to you immediately. For warranty issues, please return to the place of installation and contact ReadyLIFT.

(877) 759-9991

MON-FRI 7AM-4PM PST

OR

EMAIL: support@readylift-ami.COM

WEBSITE: ReadyLIFT.COM

****Please retain this document in your vehicle at all times.****

READYLIFT "NO HASSLE" PRODUCT WARRANTY

This unique "no hassle" product warranty proves our commitment to the quality of every product the ReadyLIFT produces. ReadyLIFT product warranty only extends to the Original Purchaser of any ReadyLIFT product. If it breaks, we will give you a new part.

READYLIFT "NO HASSLE" WARRANTY PROCEDURES

Any ReadyLIFT products containing missing or defective components will be covered under warranty by ReadyLIFT. Please call 800-549-4620 to initiate a warranty claim. Rest assured our customer service team will urgently address the matter and expedite the replacement parts. In the event of a defective product, ReadyLIFT may request a return of the defective product (at ReadyLIFT's expense) so the quality team can analyze the nature of the defect. Returning defective product will not delay the replacement part delivery.

ReadyLIFT leveling kit, block kits, and lift kit products are NOT intended for off-road abuse. Any abuse or damage as a result of off-road use voids the warranty of the ReadyLIFT product. Exception: ReadyLIFT Jeep SST and Terrain Flex Lift Kits are designed for normal off-road use to compliment the Jeep vehicle's off-road capability. All Jeep Lift Kit products are covered under warranty when used in recreational off-road environments.

Warranty does not apply to discontinued, clearance or outlet products. Wearable components including but not limited to, shocks, ball joints, heim joints, bushings, and steering extensions, are covered for up to 1-year. Labor, installation, surcharges or any other applicable fees from the original purchase are non-refundable. ReadyLIFT is not responsible for any consequential damage to the vehicles.

ReadyLIFT reserves the right to change, modify, or cancel this warranty without prior notice.



READ INSTRUCTIONS THOROUGHLY AND COMPLETELY BEFORE BEGINNING INSTALLATION.

INSTALLATION BY A CERTIFIED PROFESSIONAL MECHANIC IS HIGHLY RECOMMENDED.

READYLIFT® IS NOT RESPONSIBLE FOR ANY DAMAGE OR FAILURE RESULTING FROM IMPROPER INSTALLATION.

Safety Warning

MISUSE OF THIS PRODUCT COULD LEAD TO INJURY OR DEATH.

Suspension systems or components that enhance the on and off-road performance of your vehicle may cause it to handle differently than it did from the factory. Extreme care must be used to prevent loss of control or vehicle rollover during abrupt maneuvers.

Always operate your vehicle at reduced speeds to ensure your ability to control your vehicle under all driving conditions. Failure to drive safely may result in serious injury or death to driver and passengers.

Driver and passengers must ALWAYS wear your seat belts, avoid quick sharp turns and other sudden maneuvers. ReadyLIFT Suspension does not recommend the combined use of suspension lifts, body lifts, or other lifting devices.

You should never operate your vehicle under the influence of alcohol or drugs.

Constant maintenance is required to keep your vehicle safe. Thoroughly inspect your vehicle before and after every off-road use.

It is the responsibility of the retailer and/or the installer to review all state and local laws, with the end user of this product, related to bumper height laws and the lifting of their vehicle before the purchase and installation of any ReadyLIFT products.

It is the responsibility of the driver/s to check their surrounding area for obstructions, people, and animals before moving the vehicle.

All raised vehicles have increased blind spots; damage, injury and/or death can occur if these instructions are not followed.

Installation Warning

All steps and procedures described in these instructions were performed while the vehicle was properly supported on a two post vehicle lift with safety jacks.

Use caution during all disassembly and assembly steps to insure suspension components are not over extended causing damage to any vehicle components and parts included in this kit.

Included instructions are guidelines only for recommended procedures and are not meant to be definitive. Installer is responsible to insure a safe and controllable vehicle after performing modifications.

ReadyLIFT Suspension recommends the use of an OE Service Manual for model/year of vehicle when disassembly and assembly of factory and related components.

Unless otherwise specified, tighten all bolts and fasteners to standard torque specifications listed within the OE Service Manual.

Suspension components that use rubber or urethane bushings should be tightened with the vehicle at normal ride height. This will prevent premature wear or failure of the bushing and maintain ride comfort.

Larger tire and wheel combinations may increase leverage on suspension, steering, and related components.

Due to payload options and initial ride height variances, the amount of lift is a base figure. Final ride height dimensions may vary in accordance to original vehicle ride height. Always measure the vehicle ride height prior to beginning installation.

SAEJ2492 Warning

By installing this product, you acknowledge that the suspension of this vehicle has been modified. As a result, this vehicle may handle differently than that of factory-equipped vehicles. As with any vehicle, extreme care must be used to prevent loss of control or roll-over during sharp turns or abrupt maneuvers. Always wear seat belts, and drive safely, recognizing that reduced speeds and specialized driving techniques may be required. Failure to drive this vehicle safely may result in serious injury or death. Do not drive this vehicle unless you are familiar with its unique handling characteristics and are confident of your ability to maintain control under all driving conditions. Some modifications (and combinations of modifications) are not recommended and may not be permitted in your state. Consult your owner's manual, the instructions accompanying this product, and state laws before undertaking these modifications. You are responsible for the legality and safety of the vehicle you modify using these components.

Due to payload options and initial ride height variances, the amount of lift is a base figure. Final ride height dimensions may vary in accordance to original vehicle ride height. Always measure the vehicle ride height prior to beginning installation.

A lifted vehicle may have different headlight aim performance. ReadyLIFT recommends marking and recording the headlight beam position before kit installation and then adjusting, if necessary, the headlamps to the same height settings after kit installation. Set the vehicle on a level surface 10' to 15' from a solid wall or garage door. (This is a general distance with some manufacturers requiring different distances.) Note the top height of the low beam's bright spot, the top of the most intense part of the beam, for driver and passenger side. Height may vary from side to side. Repeat this procedure and adjust after lift kit is installed. Adjust if the aim is off by turning the adjusters gradually (a quarter of a turn) and looking to see where the new alignment falls. It may be easier to block one headlamp while adjusting the other. Consult the owner operation manual for procedures to adjust headlights - many automakers offer headlight aiming specs. Some states have their own specifications when it comes to headlight aim, so it's best to follow those rules when aligning headlights.

This suspension system was developed using a **285/75R17** tire with **17x8** wheel and a offset of **+35**. If wider tires are used, offset wheels may be necessary and trimming may be required. Factory wheels can be used but are not recommended with tires over 10.5" wide.

The stock spare rim can be run in an emergency - exercise extreme caution under stock spare tire operating conditions. Please note that, if running the spare factory tire, it is done for short distances and a speed not to exceed 45mph or damage to differentials may occur.

IMPORTANT NOTE:

Kit not compatible with aftermarket lift struts or other lift systems. Use of additional lift components will damage vehicle.

PRE-INSTALLATION MEASUREMENTS:

It is imperative that you record the following measurements and factory components in the tables below. ReadyLIFT tests and records as much data from each application as available at the time of product development. Vehicle manufacturers may change components or add models with different options. Recording and not exceeding the fender-to-hub-center ReadyLIFT calls out will ensure the lift on the vehicle is correct.

These measurements will affect the performance of this lift kit. Failure to ensure proper stock conditions may result in over lifting, causing premature failure of axles, CV boots and drivetrain. Over lifting a vehicle will also result in an incorrect wheel alignment. This will wear tires incorrectly. Incorrect alignment will cause poor vehicle handling issues including but not limited to under steer. Over lifting will also cause a shock top off condition resulting in poor ride quality accompanied by pops and clunks which are symptoms of prematurely wearing components.

Failure to adjust head lamps may cause dangerous driving conditions for you and other drivers on the road. Record the head lamp position before the installation of this lift or leveling kit and adjust to original factory position after the completion to ensure a safe and enjoyable experience.

VEHICLE HEIGHT MEASUREMENTS

	Driver Before	Driver After	Passenger Before	Passenger After
Front				
Rear				

****MEASUREMENT IS TO BE PERFORMED FROM CENTER OF HUB TO FENDER EDGE STRAIGHT UP FROM HUB.****

RECORD HEAD LAMP MEASUREMENTS

Driver Before	Driver After	Passenger Before	Passenger After

BILL OF MATERIALS

Front Strut Spacer	2
Front Preload Spacer	2
Rear Spring Spacer	2
M10x1.25 Serrated Flange Nuts	8

WARNING

Before starting installation: ReadyLIFT Suspension highly recommends that the installation of this product be performed by a professional mechanic with experience working on and installing suspension products. Professional knowledge and skill will typically yield the best installation results. If you need an installer in your area, please contact ReadyLIFT Suspension Customer Service to find one of our "Pro-Grade" Dealers.

INSTALLATION BY A PROFESSIONAL IS HIGHLY RECOMMENDED.

- A Factory Service Manual for your specific Year / Make / Model is highly recommended for reference during installation.
- All lifted vehicles may require additional driveline modifications and / or balancing.
- A vehicle alignment is REQUIRED after installation of this product.
- Speedometer / Computer recalibration is required if changing +/- 10% from factory tire diameter.
- A vehicle lift or hoist greatly reduces installation time. Installation time estimates are based on an available vehicle hoist.
- Vehicle must be in excellent operating condition. Repair or replace any and all worn or damaged components prior to installation.

*****Parts shown in red for picture clarification only*****

ReadyLIFT recommends all steps and procedures described in these instructions be performed while the vehicle is properly supported on a two post vehicle lift with safety jacks.

Otherwise, park vehicle on a clean flat surface and block the rear wheels for safety. Engage the parking brake.

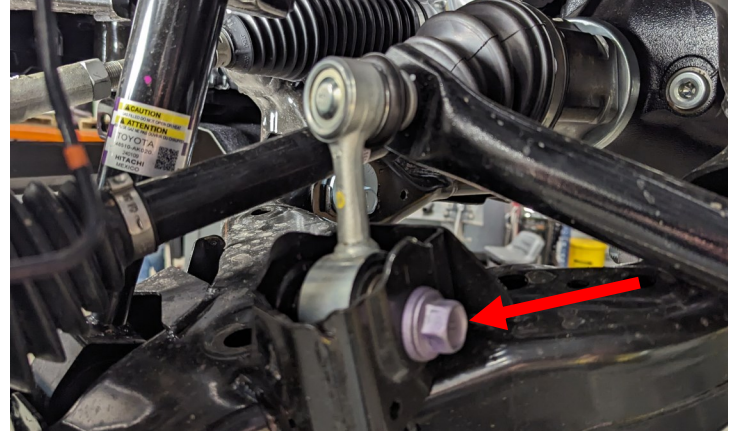
Disconnect the vehicle power source at the ground terminal on the battery.

Lock the steering wheel in the straight forward position with the column lock or steering wheel locking device.

Raise the front of the vehicle and support with safety jack stands at each frame rail behind the lower control arms. Remove the front wheels. Starting with the front of the vehicle, all steps are to be completed on both sides of the vehicle unless instructed.

Remove the **sway bar end link bolt** from the lower control arm.

RETAIN FACTORY HARDWARE.

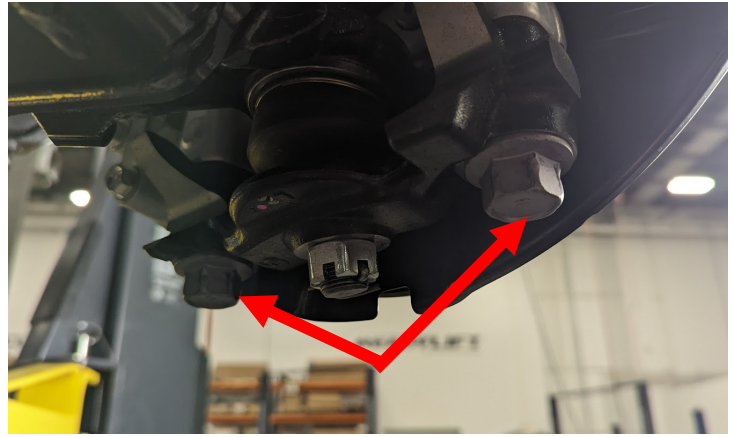


Loosen, but DO NOT REMOVE the **upper control arm bolt**.



Remove the two bolts holding the lower **ball joint cradle** to the knuckle.

RETAIN FACTORY HARDWARE.



Remove **lower control arm to strut bolt**.

RETAIN FACTORY HARDWARE.



Loosen but **DO NOT** remove **inner control arm nuts**. Allow the lower control arm to swing out of the way.

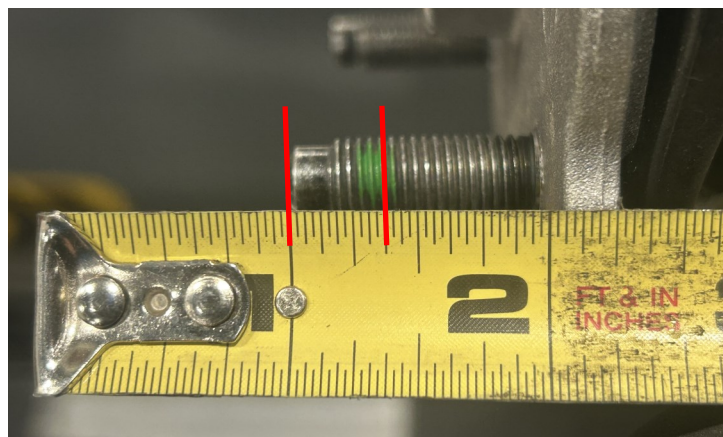


Remove the four (4) **upper strut bolts** and remove strut from vehicle.

RETAIN FACTORY HARDWARE.



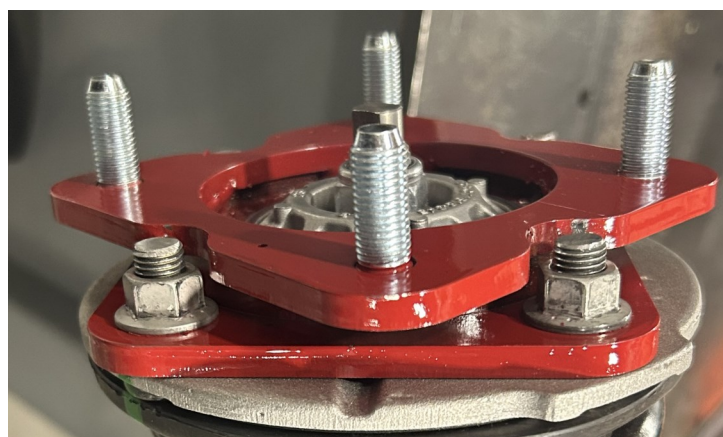
On the strut top mount, measure and mark 3/8" from the top of each stud.



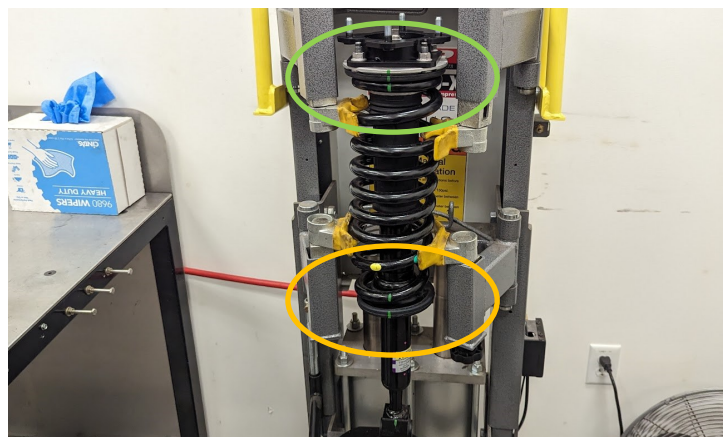
Remove the top 3/8" from each stud.



Install the **ReadyLIFT front strut spacer** onto the top of the strut. Torque nuts to 40 ft-lbs.



Place the strut assembly in a suitable spring compressor. The lower bushing hole should be perpendicular to your line of vision. Use a paint marker to mark relationship between the **spring and top mount**, as well as between the **spring and bottom mount**.



Make a mark on the **ReadyLIFT front strut spacer**, in line with the stud that is 45° counter clockwise from the mark made in the last step.



Compress the spring enough to remove the **top hat**.



Remove the **top hat, spring isolator and dust shield** from the assembly. There is a **jounce bumper** inside the dust boot. Ensure that the **jounce bumper** remains with the top hat assembly throughout this process.



Install the **ReadyLIFT preload spacer** in between the top hat and the spring isolator. The lip of the preload spacer should be facing away from the top hat, (pointing down in vehicle).



Install the **spring isolator** into the assembly.



Re-install the top hat with the preload spacer, the isolator and the dust boot and rotate the **top hat and ReadyLIFT front strut spacer** so that the mark made in the previous step aligns with the mark on the spring.



NOTE: During this process, ensure that the spring does not rotate relative to the lower spring perch.

Carefully release tension and remove the strut from the spring compressor.

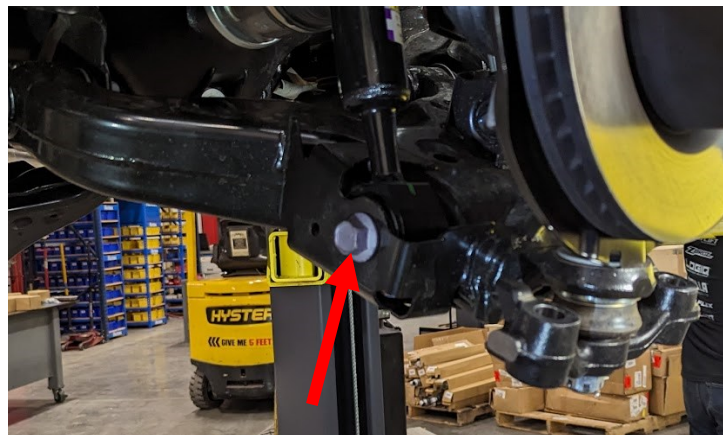


Install the **strut assembly** back into vehicle using the provided M10 flange nuts.

DO NOT TIGHTEN AT THIS TIME.

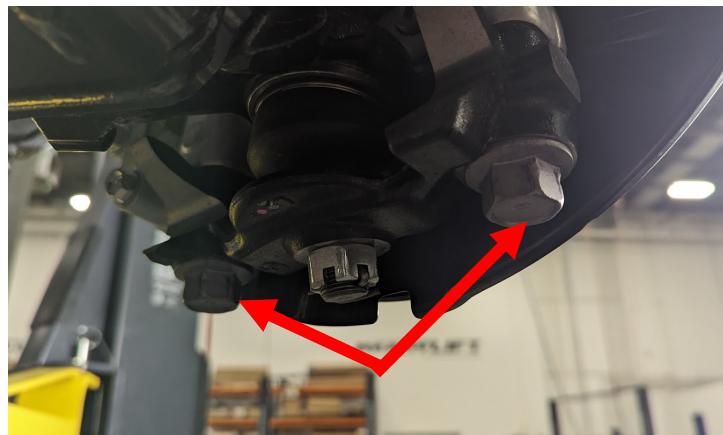


Install the **lower strut bolt and nut**.
DO NOT TIGHTEN AT THIS TIME.



Install the **lower ball joint cradle** into the **knuckle** using factory hardware.

Torque bolts to **250 ft-lbs.**



Install the **sway bar end link** to the lower control arm using factory hardware.

Torque to **80 ft-lbs.**



Rear Install

Block the front tires and raise the rear of the vehicle using a suitable jack.

Support with jack stands at each frame rail in front of the rear control arm pockets.

Place a jack under the axle for support. Remove the rear wheels.

Loosen, but DO NOT REMOVE forward nut and bolt of **lower control arm**.



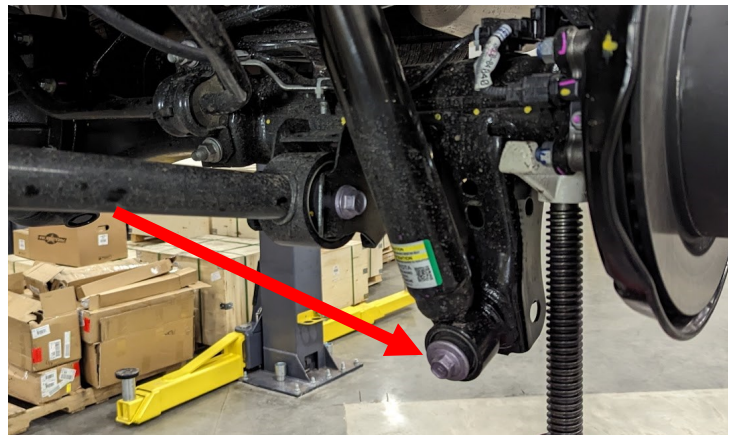
Disconnect **sway bar link** from sway bar.

RETAIN FACTORY HARDWARE.



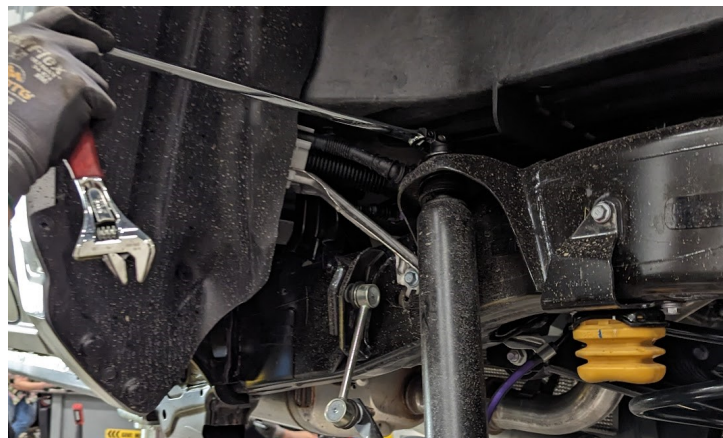
Remove **lower shock bolt**.

RETAIN FACTORY HARDWARE.



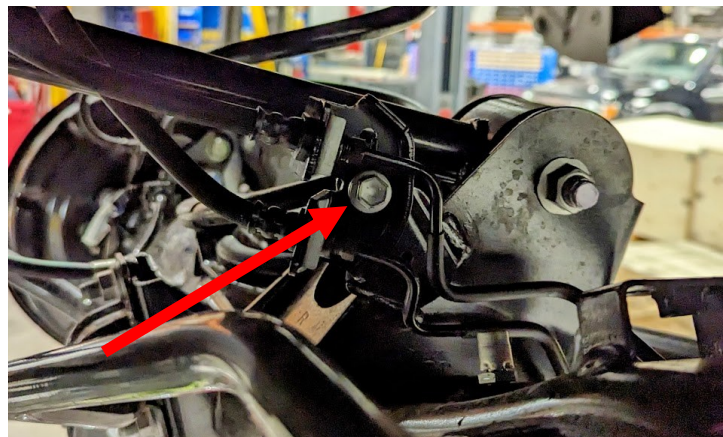
Loosen, but DO NOT REMOVE **upper shock nut**. Ensure axle is supported, and disconnect shock from axle stud.

Repeat previous 4 steps for the opposite side of the vehicle.



Remove the bolt holding the **brake line bracket** to the axle.

RETAIN FACTORY HARDWARE.



Lower the axle enough to remove the **springs**.



Remove the **isolator** from the spring.



Install isolator onto **ReadyLIFT spring spacer**.



Install isolator and spacer onto the top of the **factory spring**.

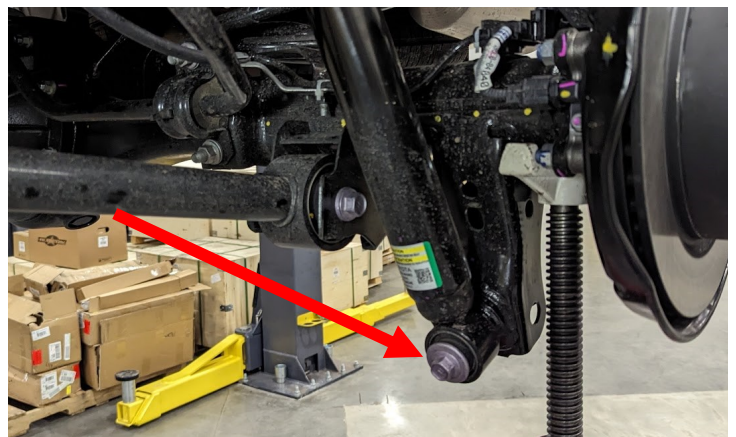


Install **spring assembly** into the vehicle.



Raise the axle in order to retain the springs in the vehicle. Raise the axle enough to re-install the **lower shock bolt**.

Torque bolt to **65 ft-lbs**.

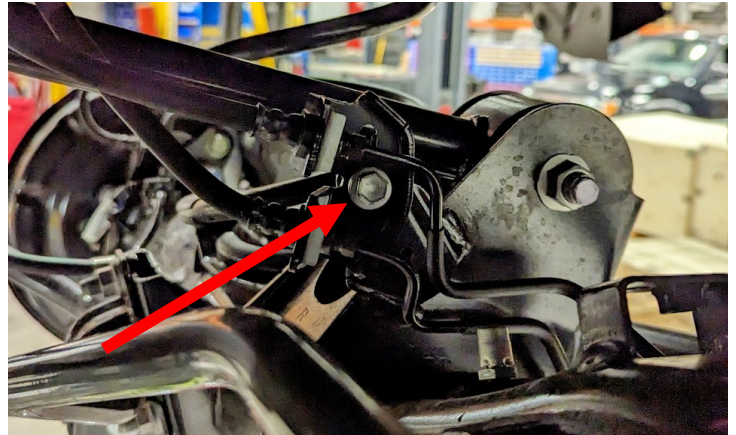


Torque **upper shock nut** to **65 ft-lbs**.



Install bolt into **brake line bracket**.

Torque bolt to **30 ft-lbs**.



Install sway bar link into sway bar.

Torque to **50 ft-lbs**.



Install the front and rear wheels and lower vehicle to the ground. Torque the lug nuts to the wheel manufacturer specs.

Torque the **front lower strut** factory hardware to **115 ft-lbs**. Torque the **front upper control arm** hardware to **150 ft-lbs**.

Torque the **rear lower control arm** forward hardware to **150 ft-lbs**.

Attach the vehicle negative power source. Have the alignment set to the recommended specs at the end of the instructions.



FAILURE TO PERFORM THE POST INSPECTION CHECKS MAY RESULT IN VEHICLE COMPONENT DAMAGE AND/OR PERSONAL INJURY OR DEATH TO THE DRIVER AND/OR OTHERS.

Final Checks & Adjustments

Once the vehicle is lowered to the ground, check all parts which have rubber or urethane components to ensure proper torque. Torque lug nuts to the wheel manufacturer specs. Move vehicle backwards and forwards a short distance to allow suspension components to adjust. Turn the front wheels completely left then right and verify adequate tire, wheel, brake line, and ABS wire clearance. Test and inspect steering, brake and suspension components for tightness and proper operation. Inspect brakes hoses and ABS lines for adequate slack at full extension, adjust as necessary.

RECHECK ALL HARDWARE FOR PROPER TORQUE VALUES AFTER 500 MILES, AND THEN PERIODICALLY AT EACH SERVICE INTERVAL THERAFTER.

Vehicle Handling Warning

Increasing the height of your vehicle raises the center of gravity and can affect stability and control. Use caution on turns and when making steering corrections.

Vehicles with larger tires and wheels will handle differently than stock vehicles. Take time to familiarize yourself with the handling of your vehicle.

Wheel Alignment/Headlamp Adjustment

It is necessary to have a proper and professional wheel alignment performed by a certified alignment technician. Align the vehicle to factory specifications. It is recommended that your vehicle alignment be checked after any off-road driving.

In addition to your vehicle alignment, for your safety and others, it is necessary to check and adjust your vehicle headlamps for proper aim and alignment. If the vehicle is equipped with active or passive safety/collision monitoring and/or avoidance systems including, but not limited to, camera- or radar-based systems, check and adjust your vehicle's systems for proper aim and function.

RECOMMENDED ALIGNMENT SPECS

Front	Driver	Passenger	Tolerance	Total / Split
Camber	+0.4	+0.4	+/- 0.5	+0.0
Caster	+2.5	+2.5	+/- 0.5	+0.0
Toe	+0.05	+0.05	+/- 0.05	+0.24